



BALDWIN®

Springfield® Collection

Thank you for selecting the Springfield Collection by Baldwin for your home. All products have been crafted from solid brass, then carefully polished and protected with a clear baked-on coating.

For all of your new construction or remodeling needs, look for Baldwin's complete line of door hardware and other quality decorative home decor products at your Baldwin retailer.

Caring for your Baldwin Products

The Springfield Collection accessories should be washed with warm and soapy water and a soft cloth or sponge. Do not use abrasive cleaners or cleaners containing bleach.

Tools Required

Dry Wall Installation:

Drill with 5/16" drill bit
Phillips screwdriver
Hammer

Wood Wall Installation:

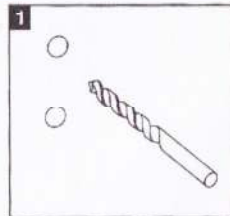
Drill with 1/8" drill bit
Phillips screwdriver

Masonry Wall or Tile on Masonry/Dry Wall Installation:

Drill with 3/16" masonry drill bit
Phillips screwdriver
Hammer

Step 1 – Prepare the Wall

Place towel ring in desired location. Place the mounting plate on the wall with the two screw holes oriented vertically. Mark the two screw hole locations on the wall.



Supplies Enclosed



Note:

For best results, avoid wall studs. It is suggested to use a level to mark the holes.

Dry Wall Installation:

Drill two 5/16" holes for wall anchors.

Wood Wall Installation:

Drill two 1/8" holes for wood screws.

Masonry Wall or Tile on Masonry/Dry Wall Installation:

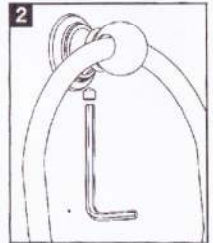
Drill two 3/16" holes for screw anchors.

Tile Installation Tip:

Tile surface glazing may need to be broken to help start drill bit.

Step 2 – Prepare the Post

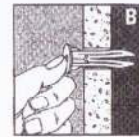
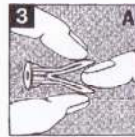
Insert the long leg of the hex wrench (5) into the supplied set screw (1). Insert the set screw into the post, turning it 1 to 2 full turns.



Step 3 – Wall Installation

Dry Wall or Tile on Dry Wall Installation for 3/8" to 1/2" Dry Wall:

(A) Fold the wall anchor (6) as shown. (B) Insert the wall anchor and tap flush to the wall with a hammer. (C) Press the key (3) into the wall anchor until it pops open. Do not force or hammer key. Proceed to Step 4.



Wood Wall Installation:

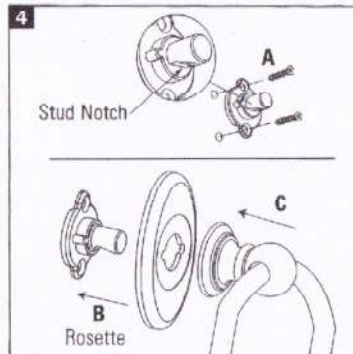
Proceed to Step 4.

Masonry Wall or Tile on Masonry/Dry Wall Installation:

Insert the screw anchors (2) into the holes and tap flush to the wall with a hammer. Proceed to Step 4.

Step 4 – Hardware Installation

(A) Using the wood screws (4), attach the mounting plate (7) to the wall with the stud notch oriented downward. (B) Place the rosette over the mounting plate and use the two notches in the rosette for alignment to the mounting plate. (C) Slide the post onto the mounting plate stud and insert the short end of the hex wrench (5) into the set screw (1). Tighten the post to the mounting plate.



Installation Tip:

Lubricate screw threads with a small amount of household soap or wax for easier threading.