

SOLID BRASS HINGES - RESIDENTIAL DUTY, PLAIN BEARING, EXTRUDED

3 1/2" x 3 1/2", 4" x 4"

**3 1/2" x 3 1/2" Residential Duty
Square Corner**



**3 1/2" x 3 1/2" Residential Duty
1/4" Radius Corner**



**3 1/2" x 3 1/2" Residential Duty
5/8" Radius Corner**



Residential Duty Hinges - Solid Extruded Brass Plain Bearing, 0.096" - 0.098" Thick

Description	Product Code	Finish	Hinges Per Case	List Price (Per Pair) Broken Case	List Price (Per Pair) 1-5 Cases	List Price (Per Pair) 6+ Cases
3 1/2" x 3 1/2" with Square Corners	96113	French Antique (US7) Oil Rubbed Bronze (US10B) Satin Nickel (US15)	50 (Pair)	\$25.00	\$20.00	\$18.00
4" x 4" with Square Corners	96114	Pewter (US15A) Polished Chrome (US26) PVD-Lifetime	50 (Pair)	\$27.00	\$22.00	\$20.00
3 1/2" x 3 1/2" with 1/4" Radius Corners	96123	French Antique (US7) Oil Rubbed Bronze (US10B) Satin Nickel (US15)	50 (Pair)	\$25.00	\$20.00	\$18.00
4" x 4" with 1/4" Radius Corners	96124	Pewter (US15A) Polished Chrome (US26) PVD-Lifetime	50 (Pair)	\$27.00	\$22.00	\$20.00
3 1/2" x 3 1/2" with 5/8" Radius Corners	96133	French Antique (US7) Oil Rubbed Bronze (US10B) Satin Nickel (US15)	50 (Pair)	\$25.00	\$20.00	\$18.00
4" x 4" with 5/8" Radius Corners	96134	Pewter (US15A) Polished Chrome (US26) PVD-Lifetime	50 (Pair)	\$27.00	\$22.00	\$20.00

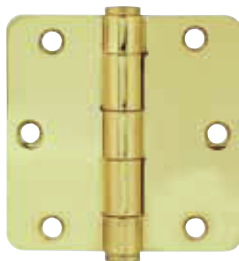
>> See page 125 for Decorative Tip Sets for Solid Brass Hinges.

Prices Are Per Pair. All Hinges Supplied with Screws, and Stainless Steel Pins.
Non-Removable Pin (NRP) is available for additional \$4.00 per pair (List Price).

HEAVY DUTY, PLAIN BEARING, EXTRUDED - **SOLID BRASS HINGES**

3 1/2" x 3 1/2", 4" x 4", 4 1/2" x 4 1/2"

**3 1/2" x 3 1/2" Heavy Duty
1/4" Radius Corner**



**4" x 4" Heavy Duty
5/8" Radius Corner**



**4 1/2" x 4 1/2" Heavy Duty
Square Corner**



Heavy Duty Hinges - Solid Extruded Brass Plain Bearing, 0.130" - 0.132" Thick

Description	Product Code	Finish	Hinges Per Case	List Price (Per Pair) Broken Case	List Price (Per Pair) 1-5 Cases	List Price (Per Pair) 6+ Cases
3 1/2" x 3 1/2" with Square Corners	96213	French Antique (US7) Oil Rubbed Bronze (US10B) Satin Nickel (US15)	24 (Pair)	\$28.00	\$24.00	\$22.00
4" x 4" with Square Corners	96214	Pewter (US15A) Polished Chrome (US26) PVD-Lifetime	24 (Pair)	\$32.00	\$28.00	\$24.00
4 1/2" x 4 1/2" with Square Corners	96215		24 (Pair)	\$36.00	\$32.00	\$28.00
3 1/2" x 3 1/2" with 1/4" Radius Corners	96223	French Antique (US7) Oil Rubbed Bronze (US10B) Satin Nickel (US15)	24 (Pair)	\$28.00	\$24.00	\$22.00
4" x 4" with 1/4" Radius Corners	96224	Pewter (US15A) Polished Chrome (US26) PVD-Lifetime	24 (Pair)	\$32.00	\$28.00	\$24.00
4 1/2" x 4 1/2" with 1/4" Radius Corners	96225		24 (Pair)	\$36.00	\$32.00	\$28.00
3 1/2" x 3 1/2" with 5/8" Radius Corners	96233	French Antique (US7) Oil Rubbed Bronze (US10B) Satin Nickel (US15)	24 (Pair)	\$28.00	\$24.00	\$22.00
4" x 4" with 5/8" Radius Corners	96234	Pewter (US15A) Polished Chrome (US26) PVD-Lifetime	24 (Pair)	\$32.00	\$28.00	\$24.00

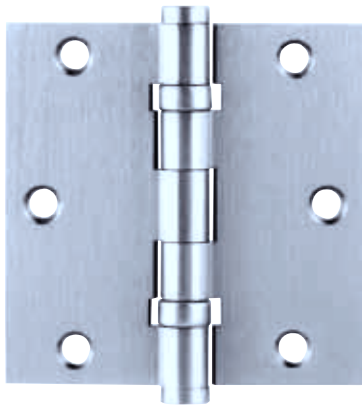
>> See page 125 for Decorative Tip Sets for Solid Brass Hinges.

Prices Are Per Pair. All Hinges Supplied with Screws, and Stainless Steel Pins. Non-Removable Pin (NRP) is available for additional \$4.00 per pair (List Price).

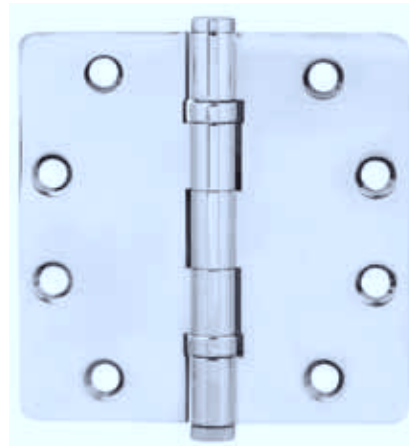
SOLID BRASS HINGES - BALL BEARING, EXTRUDED

3 1/2" x 3 1/2", 4" x 4", 4 1/2" x 4 1/2", 5" x 5"

**3 1/2" x 3 1/2" Ball Bearing
Square Corner**



**4 1/2" x 4 1/2" Ball Bearing
1/4" Radius Corner**



Heavy Duty Ball Bearing Hinges - Solid Extruded Brass 0.122" - 0.134" Thick

Description	Product Code	Finish	Hinges Per Case	List Price (Per Pair) Broken Case	List Price (Per Pair) 1-5 Cases	List Price (Per Pair) 6+ Cases
3 1/2" x 3 1/2" with Square Corners	96413	French Antique (US7) Oil Rubbed Bronze (US10B) Satin Nickel (US15)	24 (Pair)	\$30.00	\$26.00	\$24.00
4" x 4" with Square Corners	96414	Pewter (US15A) Polished Chrome (US26) PVD-Lifetime	24 (Pair)	\$35.00	\$31.00	\$27.00
4 1/2" x 4 1/2" with Square Corners	96415		24 (Pair)	\$40.00	\$36.00	\$32.00
5" x 5" with Square Corners	96416		24 (Pair)	\$44.00	\$40.00	\$36.00
4 1/2" x 4 1/2" with 1/4" Radius Corners	96425	French Antique (US7) Oil Rubbed Bronze (US10B) Satin Nickel (US15) Pewter (US15A) Polished Chrome (US26) PVD-Lifetime	24 (Pair)	\$40.00	\$36.00	\$32.00

>> See page 125 for Decorative Tip Sets for Solid Brass Hinges.

Prices Are Per Pair. All Hinges Supplied with Screws, and Stainless Steel Pins. Non-Removable Pin (NRP) is available for additional \$4.00 per pair (List Price).

DECORATIVE TIPS FOR SOLID BRASS HINGES

Ball Tip Sets *4 tips per set*

Ball Tip
for 3 1/2" Hinges



Ball Tip
for 4 1/2" Hinges



Description	Product Code	Finish	List Price
3 1/2" x 3 1/2" Residential Duty Hinges	97203	French Antique (US7) Oil Rubbed Bronze (US10B) Satin Nickel (US15)	\$12.00
4" x 4" Residential Duty Hinges	97204	Pewter (US15A) Polished Chrome (US26) PVD-Lifetime	\$12.00
3 1/2" x 3 1/2" Heavy Duty Hinges or Ball Bearing Hinges	97303	French Antique (US7) Oil Rubbed Bronze (US10B) Satin Nickel (US15) Pewter (US15A)	\$12.00
4" x 4" Heavy Duty Hinges or Ball Bearing Hinges	97304	Polished Chrome (US26) PVD-Lifetime	\$12.00
4 1/2" x 4 1/2" Heavy Duty Hinges or Ball Bearing Hinges	97305	French Antique (US7) Oil Rubbed Bronze (US10B) Satin Nickel (US15) Pewter (US15A) Polished Chrome (US26) PVD-Lifetime	\$12.00

Steeple Tip Sets *4 tips per set*

Steeple Tip
for 3 1/2" Hinges



Steeple Tip
for 4" Hinges



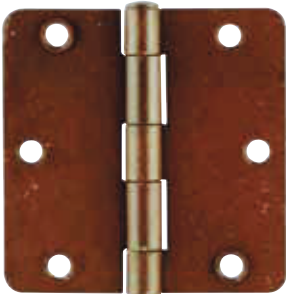
Description	Product Code	Finish	List Price
3 1/2" x 3 1/2" Residential Duty Hinges	97213	French Antique (US7) Oil Rubbed Bronze (US10B) Satin Nickel (US15)	\$12.00
4" x 4" Residential Duty Hinges	97214	Pewter (US15A) Polished Chrome (US26) PVD-Lifetime	\$12.00
3 1/2" x 3 1/2" Heavy Duty Hinges or Ball Bearing Hinges	97313	French Antique (US7) Oil Rubbed Bronze (US10B) Satin Nickel (US15) Pewter (US15A)	\$12.00
4" x 4" Heavy Duty Hinges or Ball Bearing Hinges	97314	Polished Chrome (US26) PVD-Lifetime	\$12.00
4 1/2" x 4 1/2" Heavy Duty Hinges or Ball Bearing Hinges	97315	French Antique (US7) Oil Rubbed Bronze (US10B) Satin Nickel (US15) Pewter (US15A) Polished Chrome (US26) PVD-Lifetime	\$12.00

Prices Are Per Pair. Each set includes four tips, suitable for one pair of hinges.
Compatible with Solid Brass Residential Duty, Heavy Duty and Ball Bearing Hinges.

HINGES - RESIDENTIAL DUTY, PLAIN BEARING

3 1/2" x 3 1/2", 4" x 4"

**3 1/2" x 3 1/2" Residential Duty
1/4" Radius Corner**



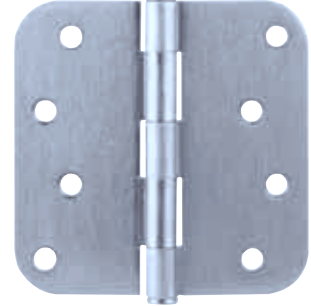
**3 1/2" x 3 1/2" Residential Duty
5/8" Radius Corner**



**4" x 4" Residential Duty
Square Corner**



**4" x 4" Residential Duty
5/8" Radius Corner**



Residential Duty Hinges Plain Bearing, Plated Steel 0.084" - 0.090" Thick

Description	Product Code	Finish	Hinges Per Case	List Price (Per Pair) Broken Case	List Price (Per Pair) 1-5 Cases	List Price (Per Pair) 6+ Cases
3 1/2" x 3 1/2" with Square Corners	91013	Polished Brass (US3) French Antique (US7) Oil Rubbed Bronze (US10B) Satin Nickel (US15) Pewter (US15A) Polished Chrome (US26) Satin Chrome (US26D) Flat Black (FB) Deep Burgundy (DB) Medium Bronze (MB) Rust (R) Silver Patina (SP) Satin Steel	24 (Pair)	\$9.00	\$8.00	\$7.50
4" x 4" with Square Corners	91014		24 (Pair)	\$10.50	\$8.50	\$8.00
3 1/2" x 3 1/2" with 1/4" Radius Corners	91023		24 (Pair)	\$9.00	\$8.00	\$7.50
4" x 4" with 1/4" Radius Corners	91024		24 (Pair)	\$10.50	\$8.50	\$8.00
3 1/2" x 3 1/2" with 5/8" Radius Corners	91033		24 (Pair)	\$9.00	\$8.00	\$7.50
4" x 4" with 5/8" Radius Corners	91034		24 (Pair)	\$10.50	\$8.50	\$8.00

>> **Decorative Tips are not available with Residential Duty Hinges, Plain Bearing.**

Prices Are Per Pair. All Hinges Supplied with Screws.
Non-Removable Pin (NRP) is available for additional \$4.00 per pair (List Price).

HEAVY DUTY, PLAIN BEARING - HINGES

3 1/2" x 3 1/2", 4" x 4", 4 1/2" x 4 1/2"

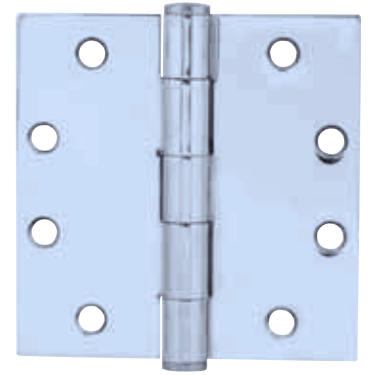
**3 1/2" x 3 1/2" Heavy Duty
1/4" Radius Corner**



**4" x 4" Heavy Duty
Square Corner**



**4 1/2" x 4 1/2" Heavy Duty
Square Corner**



Heavy Duty Hinges *Plain Bearing, Plated Steel 0.118" - 0.126" Thick*

Description	Product Code	Finish	Hinges Per Case	List Price (Per Pair) Broken Case	List Price (Per Pair) 1-5 Cases	List Price (Per Pair) 6+ Cases
3 1/2" x 3 1/2" with Square Corners	92013	Polished Brass (US3) French Antique (US7) Oil Rubbed Bronze (US10B) Satin Nickel (US15)	24 (Pair)	\$14.00	\$12.00	\$11.00
4" x 4" with Square Corners	92014	Pewter (US15A) Polished Chrome (US26) Satin Chrome (US26D) Flat Black (FB)	24 (Pair)	\$17.00	\$14.00	\$13.00
4 1/2" x 4 1/2" with Square Corners	92015	Deep Burgundy (DB) Medium Bronze (MB) Rust (R) Silver Patina (SP)	24 (Pair)	\$21.00	\$17.00	\$16.00
3 1/2" x 3 1/2" with 1/4" Radius Corners	92023	Satin Steel	24 (Pair)	\$14.00	\$12.00	\$11.00
4" x 4" with 1/4" Radius Corners	92024		24 (Pair)	\$17.00	\$14.00	\$13.00
4 1/2" x 4 1/2" with 1/4" Radius Corners	92025		24 (Pair)	\$21.00	\$17.00	\$16.00

>> See page 130 for Decorative Tip Sets for Steel Hinges.

Prices Are Per Pair. All Hinges Supplied with Screws.
Non-Removable Pin (NRP) is available for additional \$4.00 per pair (List Price).

HINGES - HEAVY DUTY BALL BEARING

3 1/2" x 3 1/2", 4" x 4", 4 1/2" x 4 1/2"

**4" x 4" Ball Bearing
1/4" Radius Corner**



**4" x 4" Ball Bearing
Square Corner**



**4 1/2" x 4 1/2" Ball Bearing
1/4" Radius Corner**



Heavy Duty Ball Bearing Hinges *Plated Steel 0.126" Thick*

Description	Product Code	Finish	Hinges Per Case	List Price (Per Pair) Broken Case	List Price (Per Pair) 1-5 Cases	List Price (Per Pair) 6+ Cases
3 1/2" x 3 1/2" with 5/8" Radius Corners	94033	Polished Brass (US3) French Antique (US7) Oil Rubbed Bronze (US10B) Satin Nickel (US15)	24 (Pair)	\$22.00	\$21.00	\$20.00
4" x 4" with Square Corners	94014	Pewter (US15A) Polished Chrome (US26) Satin Chrome (US26D) Deep Burgundy (DB) Flat Black (FB)	24 (Pair)	\$24.00	\$22.00	\$21.00
4 1/2" x 4 1/2" with Square Corners	94015	Medium Bronze (MB) Rust (R) Silver Patina (SP) Satin Steel	24 (Pair)	\$32.00	\$27.00	\$26.00
4" x 4" with 1/4" Radius Corners	94024		24 (Pair)	\$24.00	\$22.00	\$21.00
4 1/2" x 4 1/2" with 1/4" Radius Corners	94025		24 (Pair)	\$32.00	\$27.00	\$26.00

>> See page 130 for Decorative Tip Sets for Steel Hinges.

Prices Are Per Pair. All Hinges Supplied with Screws.
Non-Removable Pin (NRP) is available for additional \$4.00 per pair (List Price).

UL LISTED - SPRING HINGES
 3 1/2" x 3 1/2", 4" x 4"

3 1/2" x 3 1/2" Spring Hinge
 1/4" Radius Corner



4" x 4" Spring Hinge
 1/4" Radius Corner



Spring Hinges, UL Listed *Plated Steel 0.110" Thick*

Description	Product Code	Finish	Hinges Per Case	List Price (Per Pair) Broken Case	List Price (Per Pair) 1-5 Cases	List Price (Per Pair) 6+ Cases
3 1/2" x 3 1/2" with 1/4" Radius Corners	95023	Polished Brass (US3)	24 (Pair)	\$24.00	\$22.00	\$21.00
		French Antique (US7)				
		Oil Rubbed Bronze (US10B)				
		Satin Nickel (US15)				
4" x 4" with 1/4" Radius Corners	95024	Pewter (US15A)	24 (Pair)	\$24.00	\$22.00	\$21.00
		Polished Chrome (US26)				
		Satin Chrome (US26D)				
		Deep Burgundy (DB)				
3 1/2" x 3 1/2" with 5/8" Radius Corners	95033	Flat Black (FB)	24 (Pair)	\$24.00	\$22.00	\$21.00
		Medium Bronze (MB)				
		Rust (R)				
		Silver Patina (SP)				
4" x 4" with 5/8" Radius Corners	95034	Satin Steel	24 (Pair)	\$24.00	\$22.00	\$21.00

Prices Are Per Pair. All Hinges Supplied with Screws.



WOLFE'S Baldwin Brass Center

*Family Owned and Operated Since 1984
Serving Internet Customers Since 1997*

101 East King Street
Malvern, Pa. 19355
1-800-440-3225
Local: 610-408-8533
Fax: 610-640-3785
sales@wolfebrass.com



Call, fax or email us for a quote.

Email: sales@wolfebrass.com

Fax: 610-640-3785

Local Phone: 610-408-8533

Toll Free Phone: 1-800-440-3225



We have Emtex products displayed in our showroom at
101 East King Street, Malvern, PA 19355

www.wolfebrass.com